

K LINE • Converters / Isolators

6,2 mm housing

K111

Dual output frequency trip amplifier for on/off sensors



CE

Power supply	19,2..30 Vdc
Power consumption	< 25 mA
Input	1 channel, IEC1131, Namur, 2/3 wires PNP/NPN, reed, photocell
Input	Max frequency 20 kHz, min 1 pulse every 116'
Output	2 channels settable as alarms or frequency, PNP, max current 200 mA
Galvanic isolation	1,5 kVac
Status indicator	3 LED, power, thresholds, error
Connections	Spring clamps, SMART SUPPLY power
Small dimensions	6,2 x 93,1 x 102,5 mm [w x h x d]
Operating temperature	-10..+65 °C



➔ For further information, please visit www.seneca.it

K111

Dual output frequency trip amplifier for on/off sensors



ORDER CODE

Model	K111	Dual output frequency trip amplifier for on/off sensors
Accessories	K-BUS K-SUPPLY	Expandable power supply connector Power Supply module with surge protection
Programming Kit	S117P	Easy-K111 software + USB adapter

TECHNICAL FEATURES

GENERAL FEATURES

Power supply	19.2..30 Vdc
Channels number	1 input, 2 outputs
Thermal drift	< 100 ppm/K
Status indicators	Power, 2 settable (input, output, threshold, fix, inverted)
Galvanic isolation	1.5 kVac, 2 ways
Power supply on side terminals	Yes
Hot swapping	Yes
Power consumption @ 24 V	< 23 mA (2 wire sensors) < 40 mA (3 wire sensors, supplying 20mA)
Power for sensors	Range: 8±0.6 V, 12±1 V, 22±2 V Internal impedance: ~ 1 kΩ (Namur, photocell), ~ 40 Ω (sensor power) Current 3 wires: Max 22 mA (continue), 35 mA (d.c.)
Programming	DIP switches (only input type) and PC program
Dimensions (wxhxd)	6.2 x 93.1 x 102,5 mm
Housing, weight, colour	PBT, 45 g, black
Operating temperature	-10..+65°C
Connections	Spring clamps and/or bus (EN 60175)
Protection degree	IP20
Approvals	CE, EN 61000-6-4, EN 64000-6-2, EN 61010-1

INPUT

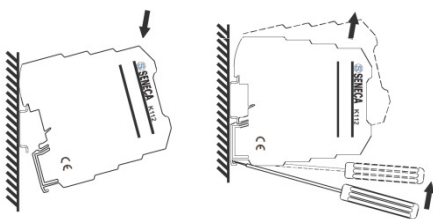
Channels	1
Type	Mechanical contact, per std. IEC1131.2 type 1, NAMUR (DIN19234, EN60947-5-6), 2/3 wire NPN o PNP (12 or 22 V), Reed, photo, AICHI devices.
Switching threshold	~ 1.6 mA (Namur, PNP), ~ 3 mA (NPN)
Hysteresis	~ 0.2 mA
Frequency	DC, 1/36 h..20 kHz (calculation on N pulses, N ≤256)
Min active time	10 μs
Max voltage	±28 V

OUTPUT

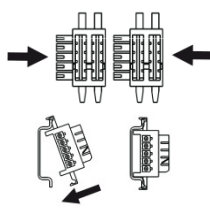
Channels	2
Type	PNP (input repetition, threshold, window, divider, fix, inverted)
Max current	±200 mA (per output)
Protection	Self-restoring fuse
Max voltage	±30 V (continuous), ±50 V (peak)

INSTALLATION, CONNECTION, DIMENSIONS

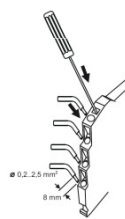
INSERTION/ MODULES REMOVAL



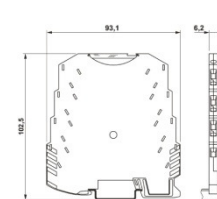
K-BUS CONNECTOR



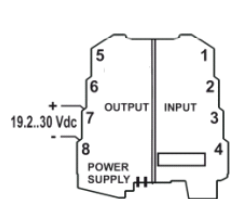
SPRING-CLAMPS



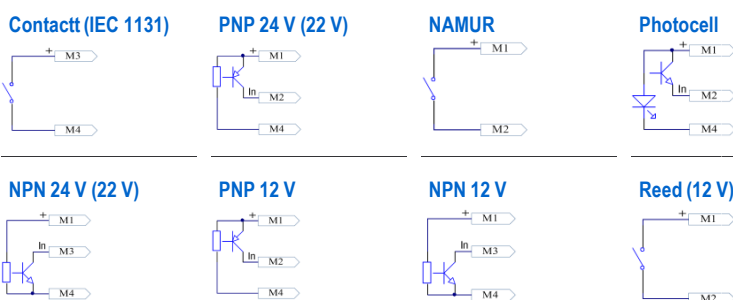
DIMENSIONS



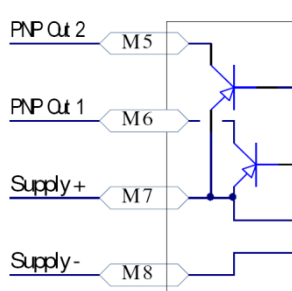
POWER SUPPLY



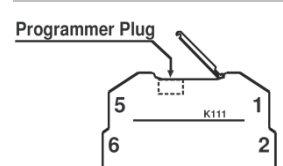
INPUTS



OUTPUTS (PNP)



PROGRAMMING PORT



via Germania, 34 • 35127 Padova - Italy - Ph +39 049 87.05.359 (.408)
Fax +39 049 87.06.287 • www.seneca.it • info@seneca.it

Document subject to modifications and revisions. Reproduction forbidden if not authorized.