

K LINE • Converters / Isolators

6,2 mm wide

K112

Universal digital coupler/isolator



CE

Power supply
Input

19,2-30 V

Pulse input for all the most common sensors: mechanical contact, IEC1131, NAMUR, 2 or 3 wire NPN/PNP with 12 V or 22 V, Reed, photo-transistor and AICHI devices.

Max frequency 400 Hz

Transducer Supply
Output

8 ±0,6 V, 12 ±1 V, 22 ±2 V

Standard simultaneous NPN and PNP output

Galvanic Isolation

1,5 kVac @ 2 way

Electrical Connections

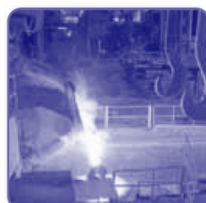
Spring-cage terminal block and/or DIN bus connection system

Tiny dimensions

93,1 x 102,5 x 6,2 mm (h x d x w)

Operating temperature

-10..+65 °C



➔ For further information, please visit www.seneca.it

K112

Universal digital coupler/isolator



ORDER CODE

Model	K112	Universal digital coupler/isolator
Accessories	K-BUS K-SUPPLY	Expandable power supply connector Power Supply module with surge protection

TECHNICAL FEATURES

GENERAL FEATURES

Power supply	19.2..30 Vdc
Number of channels	1 input, 2 outputs
Thermal derivation	< 100 ppm/K
Status indicators	Power supply, input
Igalvanic Isolation	1.5 kVac @ 2 way
Power supply on side terminals	Yes
Hot swapping	Yes
Power consumption @ 24 V	< 25 mA (2 wire sensors) < 45 mA (3 wire sensors, supplying 20 mA)
Available Voltages	Range: 8±0.6 V, 12±1 V, 22±2 V
Internal source impedance	1 kΩ (Namur, Photo), ~ 40 Ω (Sensor supply) 3 wire current: Max 22 mA (continue), 35 mA (d.c.)
Setting	DIP switch (input)
Dimensions (hxdxw)	93.1 x 102,5 x 6.2 mm
Processing	-
Housing, weight, colour	PBT, 45 g, black
Operating Temperature	-10..+65°C
Electrical connections	Spring-cage terminal block and bus EN 60175)
Protection degree	IP20
Standards	CE, EN 61000-6-4, EN 64000-6-2, EN 61010-1

INPUT

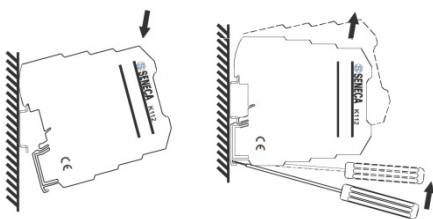
Channels	1
Type	Pulse input for all the most common sensors: mechanical contact, EC1131, NAMUR, 2 or 3 wire NPN/PNP with 12 V or 22 V, Reed, photo-transistor and AICHI devices
Switching threshold	~ 1.6 mA (Namur, PNP), ~ 3 mA (NPN)
Hysteresis	~ 8 mA (Namur), ~ 3.6 mA (PNP), ~ 5 mA (NPN)
Max frequency	400 Hz
Min active time	0,2 ms
Max Voltage	±28 V

OUTPUT

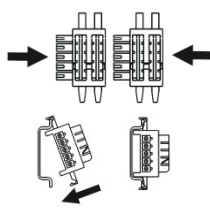
Channels	2, simultaneous
Type	PNP, NPN
Max Current	±200 mA (per output)
Protection	Fusibili autoripristinanti
Max Voltage	±30 V (continuous), ±50 V (peak)

INSTALLATION, CONNECTION, DIMENSIONS

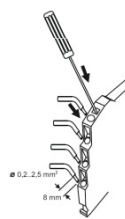
INSERTION/ MODULES REMOVAL



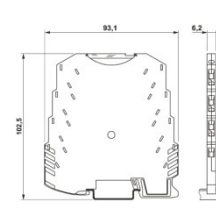
K-BUS CONNECTOR



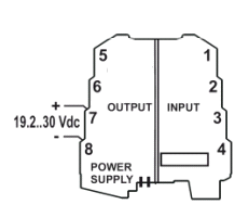
SPRING-CAGE



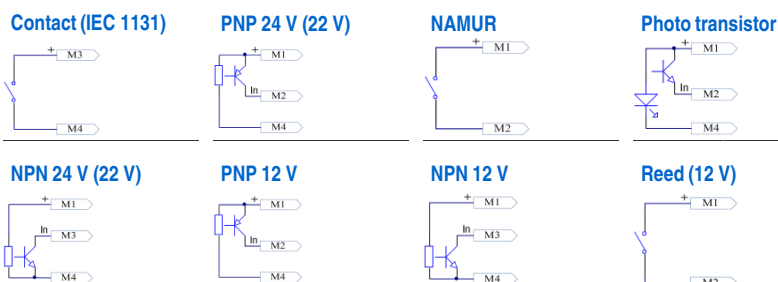
DIMENSIONS



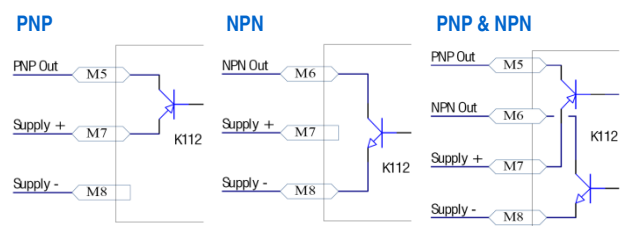
POWER SUPPLY



INPUTS



OUTPUTS



via Germania, 34 • 35127 Padova - Italy - Ph +39 049 87.05.359 (.408)
Fax +39 049 87.06.287 • www.seneca.it • info@seneca.it

Document subject to modifications and revisions. Reproduction forbidden if not authorized.

K112_0903_EN